

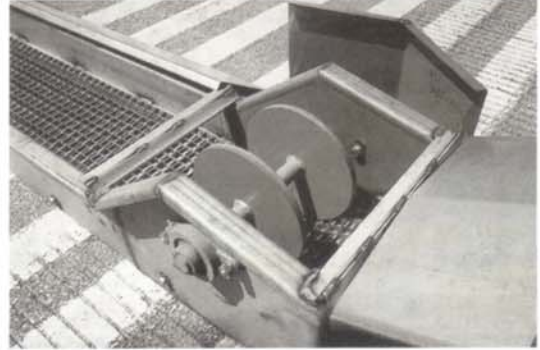
Doyle Chainbelt Conveyor Detail

LOW PROFILE - The Chainbelt's body is only 9" tall, so a deep pit is not required to install this conveyor.



Stainless grease packed take-ups on tail section.

TRANSITION SECTION DETAIL - The big 9" diameter transition rollers are gentle to the chainbelt.

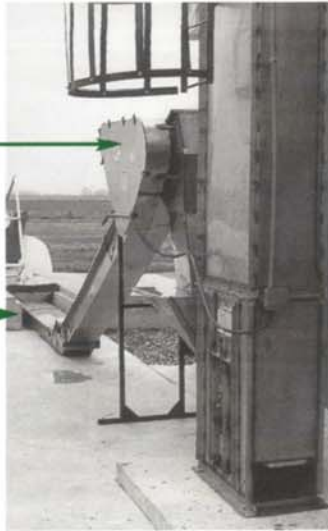


ENVIRONMENTAL COMPLIANCE - The totally enclosed construction of the Doyle Chainbelt eliminates product spillage.

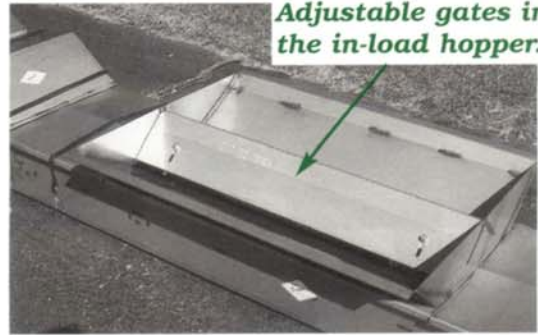
FLOW CONTROL HOPPER - Rail or truck hoppers have slide gates for controlling flow rate. Hoppers can then be flood fed.

Stainless guards and motor mount.

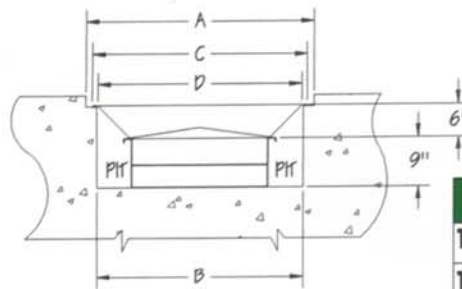
Fully enclosed bottom pan means no spillage.



Adjustable gates in the in-load hopper.



Cross Section View



HOPPER END VIEW
HOPPER IS 44" LONG

	A	B	C	D
12"	29"	26"	27"	25"
18"	35"	32"	33"	31"
24"	41"	38"	39"	37"



Doyle Equipment Mfg. Co., Inc.

P.O. Box 3024 • 3900 Broadway

Quincy, Illinois, USA 62305

217-222-1592, Fax 217-223-3655

E-mail: doyle@rnet.com • Website: www.doylemfg.com